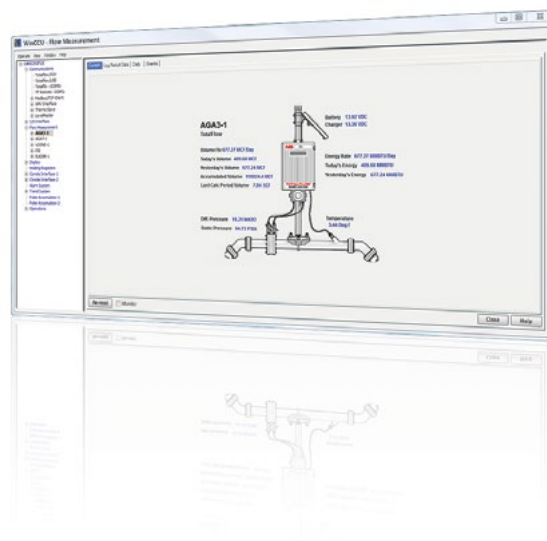


WinCCU System software products



Description

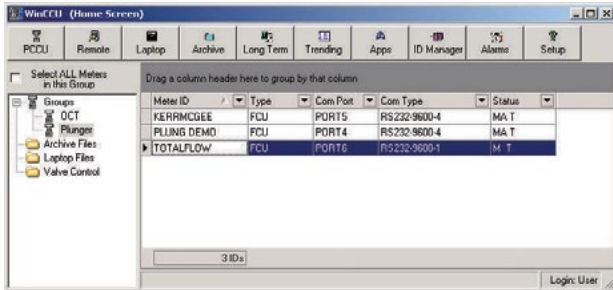
The WinCCU software provides remote communication, remote configuration and data management including an audit trail for Totalflow systems. Collected data is stored in binary form in the Archive File. Archive data is converted to a long-term database for editing. All I/O is through the WinCPC Port Manager. WinCCU supports Access and Microsoft SQL Server 2000.

WinCCU

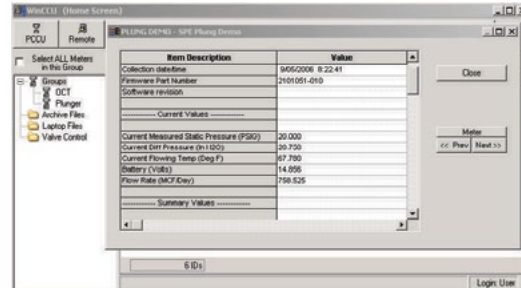
System software products

Features

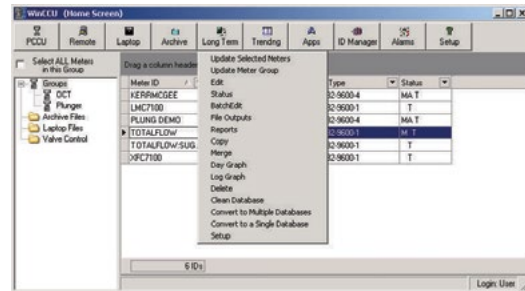
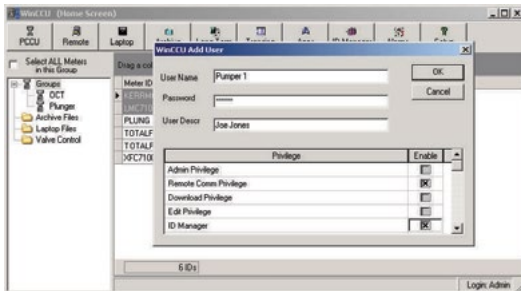
WinCCU is very versatile interface to Totalflow devices. WinCCU provides a full range of functions:



- Read and Write Totalflow Data
 - Poll for Current Information
 - Collect Historical Audit Trail Data
 - Setup Trends
 - Read Trend Data



- Configuration Setup Data
- Register Arrays
- BTU Analyzer Analysis Data
- Bulk read and write Analysis Data
- Valve Control
 - Setup and Monitor
 - Change Set Points
- Bulk Read and Write Nomination Data
- Deliverability Test Setup and Monitor
- Host Console – Configurable User Interface for Non-standard Applications
- Handheld and Laptop Collection Files
- Define Device Templates

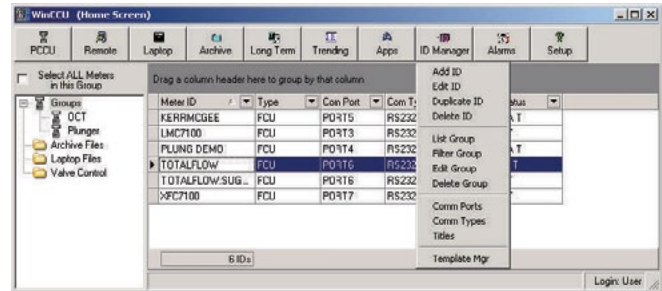
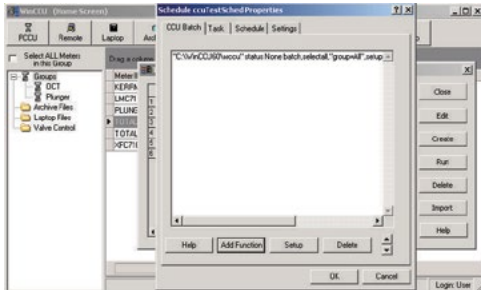


- Network
 - Designed for Network Environment
 - Modular Organization Allows Moving from a Stand-Alone PC to Corporate-Wide Networks and Over the Internet
- Security
 - Setup User Login Name and Password
 - Grant Access Rights
- Archive and Long Term Database Utilities
 - View Data
 - Import and Export Data
 - Copy, Extract, Verify
 - Merge
 - Reports
 - Daily, Hourly / Log Period
 - Characteristic
 - Events
 - Summary
 - Total Volume – Group of Devices

- Field Balance – Inputs and Outputs
- Alarms
- Calibration
- Missing Data
- Report Outputs
 - Printer
 - File
 - E-mail
 - Specify Date Range
 - Preview
- Graph Hourly and Daily Data

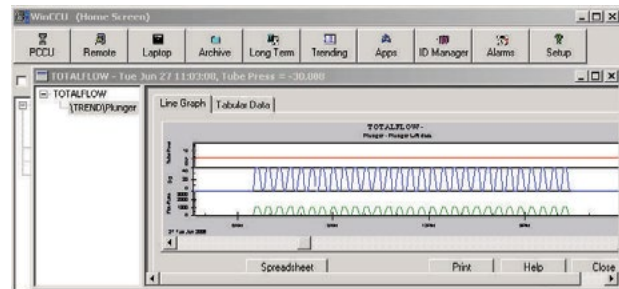
WinCCU

System software products



- Scheduler – Periodic Sequential Execution of Totalflow and other Tasks
 - Remote Communications
 - Archive and Long Term Utilities
 - Valve Control
 - Trend and BTU Collection
 - Executables, OLE Automation
 - Programmed Delays – Triggers, DDE Events
 - Set Start Time, Frequency, Interval
- Meter ID Manager
 - Define Devices for Read / Write
 - Grouping
 - Collection, Polling, Reports, or Scheduling
 - User Defined Grouping Criteria

- Setup Communication Ports
 - Define Communication Types
 - Device Type
 - Baud Rate, Link Establishment Time
 - Delays and Protocol Parameters
- Trending



Benefits

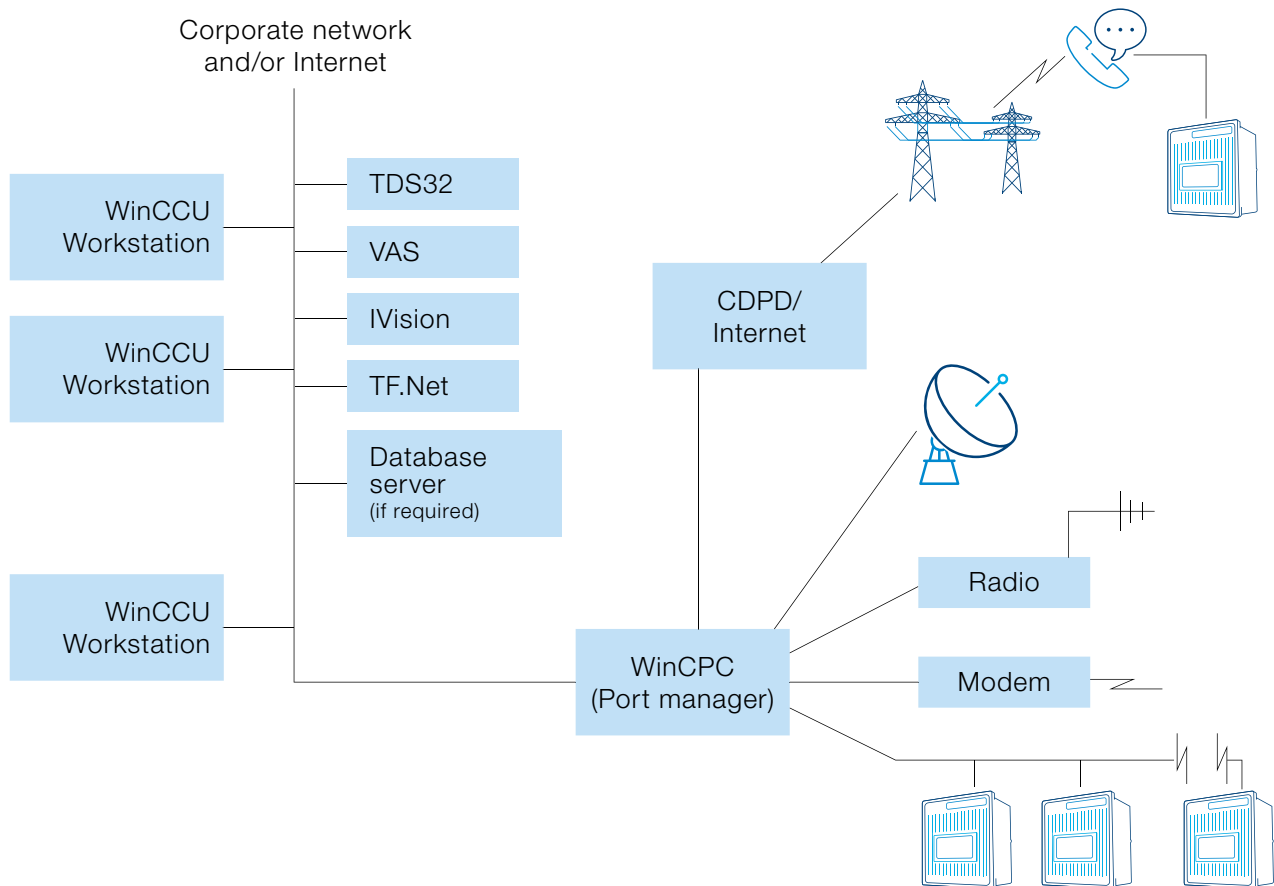
- WinCCU Provides for Efficient and Effective management of Totalflow devices and Data. This package has extensive (decades) field-testing and has been enhanced to meet user needs and to support new Totalflow devices and features.
- The WinCCU audit trail insures data integrity for users and their clients. This increases confidence in billing accuracy.
- Device monitoring means that the Production Technicians can focus on immediate problems and not waste time visiting sites that do not need attention.
- Placing historical Data into a standard database means that it can be available to any authorized user in the company – Marketing, Engineering, Accounting, etc.
- Can be combined with other Totalflow Software for additional functionality
 - PCCU – Low level device setup
 - TDS32 – OPC / DDE / Wonderware Suite Link driver for SCADA Systems and other packages such as Excel or Visual Basic
 - VAS – Voice call-out and call-in for alarms and current device information
 - SCADA Vantage Systems
 - TF.NET – Web Browser Interface to WinCCU, SCADA, and data stored in any standard Database
 - All on one PC, or distributed across a network as desired.

WinCCU

System software products

Comparison of WinCCU versions

	WinCCU Basic	WinCCU Basic with Trend	WinCCU Enterprise
Remote data collection and device configuration	✓	✓	✓
Scheduled data retrieval	✓	✓	✓
Audit trail & reporting	✓	✓	✓
Flow data editor	✓	✓	✓
Export data for 3rd party systems	✓	✓	✓
Trend data groups management and viewing		✓	✓
Import 3rd party EFM data			✓



Notes

Contact us

ABB Inc.

Upstream Oil & Gas Process Automation

Toll-free: + 1 800 442 3097
Quotes: totalflow.inquiry@us.abb.com
Orders: totalflow.order@us.abb.com
Training: totalflow.training@us.abb.com
Support: totalflowsupport@us.abb.com

Upstream Oil & Gas Main Office

7051 Industrial Boulevard
Bartlesville, OK 74006
Ph: +1 918 338 4888

Upstream Oil & Gas California Office

4300 Stine Road, Suite 405-407
Bakersfield, CA 93313
Ph: +1 661 833 2030

Upstream Oil & Gas Kansas Office

2705 Centennial Boulevard
Liberal, KS 67901
Ph: +1 620 626 4350

Upstream Oil & Gas Texas Offices

3700 West Sam Houston
Parkway South, Suite 600
Houston, TX 77042
Ph: +1 713 587 8000

3900 South County Road 1290
Odessa, TX 79765
Ph: +1 432 563 5144

150 Eagle Ford Road
Pleasanton, TX 78064
Ph: +1 830 569 8062

www.abb.com/upstream

Note

We reserve the right to make technical changes or modify the contents of this document without prior notice. With regard to purchase orders, the agreed particulars shall prevail. ABB does not accept any responsibility whatsoever for potential errors or possible lack of information in this document.

We reserve all rights in this document and in the subject matter and illustrations contained therein. Any reproduction, disclosure to third parties or utilization of its contents – in whole or in parts – is forbidden without prior written consent of ABB.

Copyright © 2016 ABB Inc.
All rights reserved



Product
webpage